

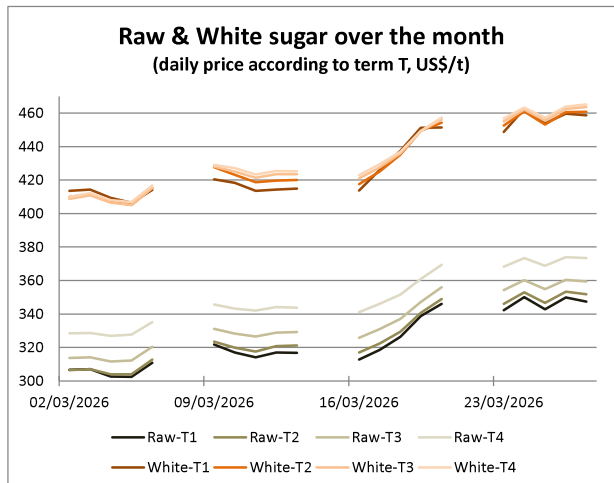


Sugar #11 and #5 : prices

March: energy prices are boosting sugar prices

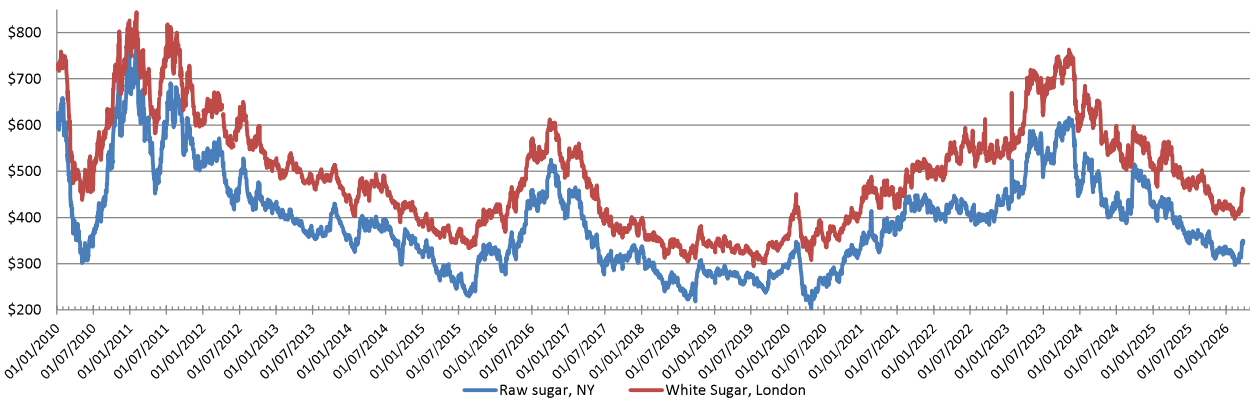
In March, energy prices boosted sugar prices, with a rise of almost 15% over the month. The bombings in the Middle East are indirectly driving sugar prices upwards. This is primarily due to the impact of oil: prices above \$100 per barrel are altering the balance of the sugar market (see the upper graph on page 4). This is evident when considering Brazil: higher oil prices mean higher ethanol prices, resulting in more sugarcane being used to produce ethanol rather than sugar. However, the reality is not so simple due to Brazilian policies: despite oil prices rising by over 20% in the last month, Brazilian ethanol has increased by no more than 2% over the same period (see p. 4). However, the psychological effect is here, with the next Brazilian season set to begin next month. In a climate where speculators are hungry for news that could alter their positions, they are taking advantage of this. Within a month, they have halved their short positions and are now net sellers of 6.4 million tonnes of sugar, compared with over 12 million tonnes at the start of March (p. 2). Naturally, 6 Mt less on the market makes a difference, even if that sugar has never actually been produced. Consequently, sugar prices are recovering, with raw sugar for delivery in May now approaching 16 cents per pound. White sugar is performing even better in the futures market, with the 'white premium' (the difference in price between refined and raw sugar) once again exceeding \$110/tonne, a level not seen since the previous marketing year. This illustrates that, on the one hand, refining is becoming less competitive due to rising energy costs worldwide. However, it also likely reflects expectations of lower demand from Gulf refineries, which have historically been major players in this sector, but which are now in turmoil. Meanwhile, grains are much calmer and freight is holding up remarkably well (p. 8), but fertilisers are beginning to react to higher energy prices (p. 8).

	Settling date	First week of March-26	Last week of March-26	Difference in currency	Difference in %
White sugar (sugar#5, London, \$/t)	May 26	411,6	456,7	45,1	11,0%
	Aug 26	409,8	457,6	47,8	11,7%
	Oct 26	409,3	459,8	50,5	12,3%
	Dec 26	410,7	461,2	50,5	12,3%
Raw sugar (sugar#11, NY, cts/lb)	May 26	13,88	15,72	1,84	13,2%
	Aug 26	13,92	15,88	1,96	14,1%
	Oct 26	14,26	16,23	1,97	13,8%
	Dec 26	14,94	16,85	1,91	12,8%
Raw sugar (sugar#11, NY, \$/t)	May 26	306,0	346,5	40,5	13,2%
	Aug 26	306,9	350,2	43,3	14,1%
	Oct 26	314,5	357,9	43,4	13,8%
	Mar 27	329,4	371,6	42,2	12,8%
Premium	Mar26 - Mar 26	105,6	110,2	4,6	4,3%



Warning ! Terms changed for the white on the 15th of Feb. And for the raw on the 28th of Feb. ! Thus, the first week of Feb. In the table above refers to the previous terms.

Sugar#11 and #5 prices since January 2010 front term, US\$/t



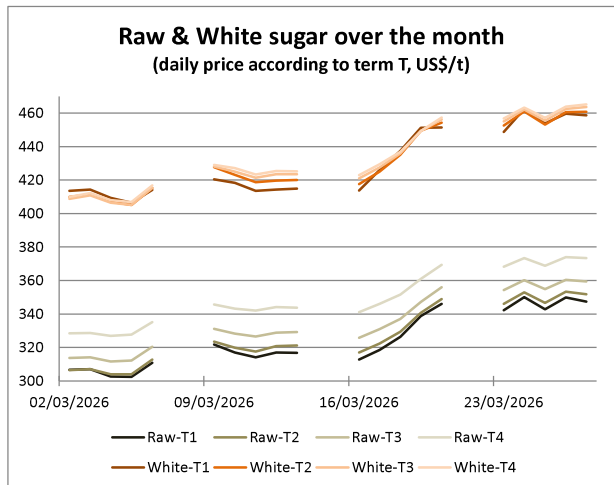


Sugar #11 and #5 : prices

March: energy prices are boosting sugar prices

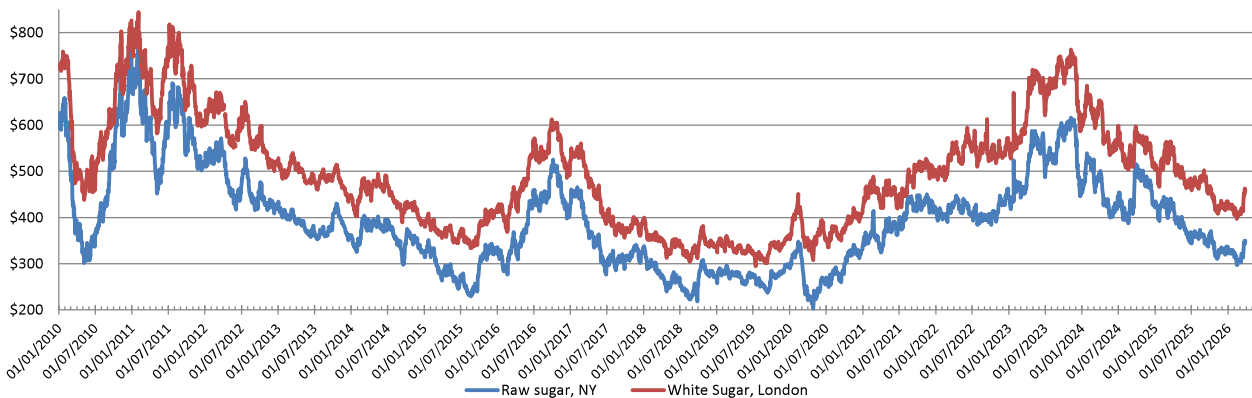
In March, energy prices boosted sugar prices, with a rise of almost 15% over the month. The bombings in the Middle East are indirectly driving sugar prices upwards. This is primarily due to the impact of oil: prices above \$100 per barrel are altering the balance of the sugar market (see the upper graph on page 4). This is evident when considering Brazil: higher oil prices mean higher ethanol prices, resulting in more sugarcane being used to produce ethanol rather than sugar. However, the reality is not so simple due to Brazilian policies: despite oil prices rising by over 20% in the last month, Brazilian ethanol has increased by no more than 2% over the same period (see p. 4). However, the psychological effect is here, with the next Brazilian season set to begin next month. In a climate where speculators are hungry for news that could alter their positions, they are taking advantage of this. Within a month, they have halved their short positions and are now net sellers of 6.4 million tonnes of sugar, compared with over 12 million tonnes at the start of March (p. 2). Naturally, 6 Mt less on the market makes a difference, even if that sugar has never actually been produced. Consequently, sugar prices are recovering, with raw sugar for delivery in May now approaching 16 cents per pound. White sugar is performing even better in the futures market, with the 'white premium' (the difference in price between refined and raw sugar) once again exceeding \$110/tonne, a level not seen since the previous marketing year. This illustrates that, on the one hand, refining is becoming less competitive due to rising energy costs worldwide. However, it also likely reflects expectations of lower demand from Gulf refineries, which have historically been major players in this sector, but which are now in turmoil. Meanwhile, grains are much calmer and freight is holding up remarkably well (p. 8), but fertilisers are beginning to react to higher energy prices (p. 8).

	Settling date	First week of March-26	Last week of March-26	Difference in currency	Difference in %
White sugar (sugar#5, London, \$/t)	May 26	411,6	456,7	45,1	11,0%
	Aug 26	409,8	457,6	47,8	11,7%
	Oct 26	409,3	459,8	50,5	12,3%
	Dec 26	410,7	461,2	50,5	12,3%
Raw sugar (sugar#11, NY, cts/lb)	May 26	13,88	15,72	1,84	13,2%
	Aug 26	13,92	15,88	1,96	14,1%
	Oct 26	14,26	16,23	1,97	13,8%
	Dec 26	14,94	16,85	1,91	12,8%
Raw sugar (sugar#11, NY, \$/t)	May 26	306,0	346,5	40,5	13,2%
	Aug 26	306,9	350,2	43,3	14,1%
	Oct 26	314,5	357,9	43,4	13,8%
	Mar 27	329,4	371,6	42,2	12,8%
Premium	Mar26 - Mar 26	105,6	110,2	4,6	4,3%



Warning ! Terms changed for the white on the 15th of Feb. And for the raw on the 28th of Feb. ! Thus, the first week of Feb. In the table above refers to the previous terms.

Sugar#11 and #5 prices since January 2010 front term, US\$/t



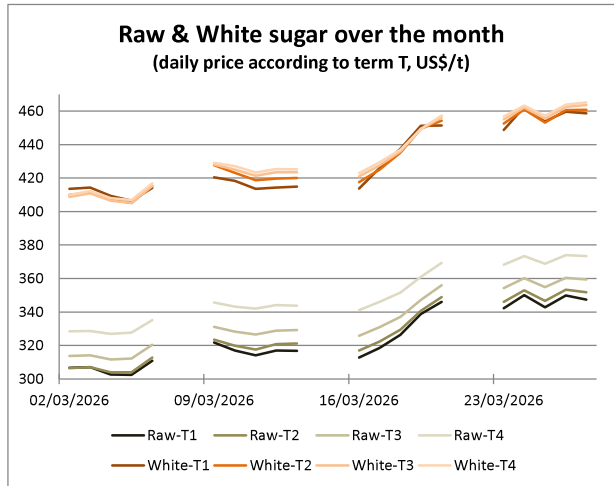


Sugar #11 and #5 : prices

March: energy prices are boosting sugar prices

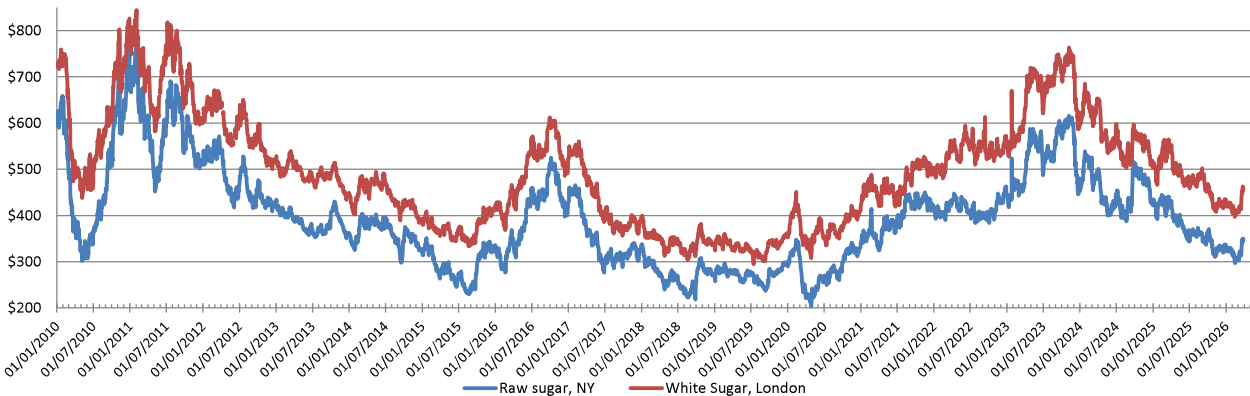
In March, energy prices boosted sugar prices, with a rise of almost 15% over the month. The bombings in the Middle East are indirectly driving sugar prices upwards. This is primarily due to the impact of oil: prices above \$100 per barrel are altering the balance of the sugar market (see the upper graph on page 4). This is evident when considering Brazil: higher oil prices mean higher ethanol prices, resulting in more sugarcane being used to produce ethanol rather than sugar. However, the reality is not so simple due to Brazilian policies: despite oil prices rising by over 20% in the last month, Brazilian ethanol has increased by no more than 2% over the same period (see p. 4). However, the psychological effect is here, with the next Brazilian season set to begin next month. In a climate where speculators are hungry for news that could alter their positions, they are taking advantage of this. Within a month, they have halved their short positions and are now net sellers of 6.4 million tonnes of sugar, compared with over 12 million tonnes at the start of March (p. 2). Naturally, 6 Mt less on the market makes a difference, even if that sugar has never actually been produced. Consequently, sugar prices are recovering, with raw sugar for delivery in May now approaching 16 cents per pound. White sugar is performing even better in the futures market, with the 'white premium' (the difference in price between refined and raw sugar) once again exceeding \$110/tonne, a level not seen since the previous marketing year. This illustrates that, on the one hand, refining is becoming less competitive due to rising energy costs worldwide. However, it also likely reflects expectations of lower demand from Gulf refineries, which have historically been major players in this sector, but which are now in turmoil. Meanwhile, grains are much calmer and freight is holding up remarkably well (p. 8), but fertilisers are beginning to react to higher energy prices (p. 8).

	Settling date	First week of March-26	Last week of March-26	Difference in currency	Difference in %
White sugar (sugar#5, London, \$/t)	May 26	411,6	456,7	45,1	11,0%
	Aug 26	409,8	457,6	47,8	11,7%
	Oct 26	409,3	459,8	50,5	12,3%
	Dec 26	410,7	461,2	50,5	12,3%
Raw sugar (sugar#11, NY, cts/lb)	May 26	13,88	15,72	1,84	13,2%
	Aug 26	13,92	15,88	1,96	14,1%
	Oct 26	14,26	16,23	1,97	13,8%
	Dec 26	14,94	16,85	1,91	12,8%
Raw sugar (sugar#11, NY, \$/t)	May 26	306,0	346,5	40,5	13,2%
	Aug 26	306,9	350,2	43,3	14,1%
	Oct 26	314,5	357,9	43,4	13,8%
	Mar 27	329,4	371,6	42,2	12,8%
Premium	Mar26 - Mar 26	105,6	110,2	4,6	4,3%



Warning ! Terms changed for the white on the 15th of Feb. And for the raw on the 28th of Feb. ! Thus, the first week of Feb. In the table above refers to the previous terms.

Sugar#11 and #5 prices since January 2010 front term, US\$/t



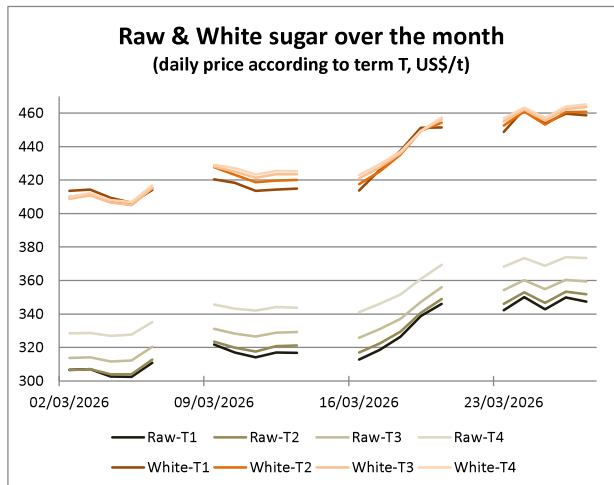


Sugar #11 and #5 : prices

March: energy prices are boosting sugar prices

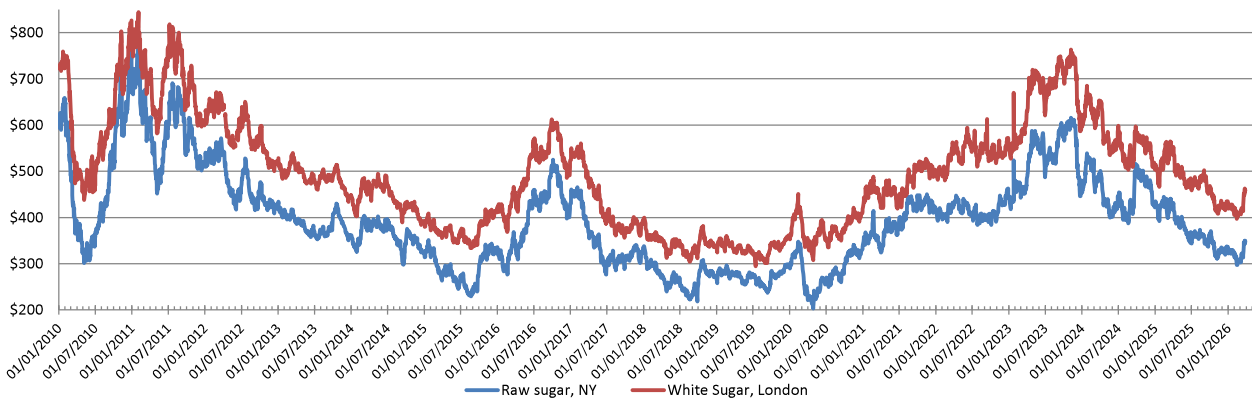
In March, energy prices boosted sugar prices, with a rise of almost 15% over the month. The bombings in the Middle East are indirectly driving sugar prices upwards. This is primarily due to the impact of oil: prices above \$100 per barrel are altering the balance of the sugar market (see the upper graph on page 4). This is evident when considering Brazil: higher oil prices mean higher ethanol prices, resulting in more sugarcane being used to produce ethanol rather than sugar. However, the reality is not so simple due to Brazilian policies: despite oil prices rising by over 20% in the last month, Brazilian ethanol has increased by no more than 2% over the same period (see p. 4). However, the psychological effect is here, with the next Brazilian season set to begin next month. In a climate where speculators are hungry for news that could alter their positions, they are taking advantage of this. Within a month, they have halved their short positions and are now net sellers of 6.4 million tonnes of sugar, compared with over 12 million tonnes at the start of March (p. 2). Naturally, 6 Mt less on the market makes a difference, even if that sugar has never actually been produced. Consequently, sugar prices are recovering, with raw sugar for delivery in May now approaching 16 cents per pound. White sugar is performing even better in the futures market, with the 'white premium' (the difference in price between refined and raw sugar) once again exceeding \$110/tonne, a level not seen since the previous marketing year. This illustrates that, on the one hand, refining is becoming less competitive due to rising energy costs worldwide. However, it also likely reflects expectations of lower demand from Gulf refineries, which have historically been major players in this sector, but which are now in turmoil. Meanwhile, grains are much calmer and freight is holding up remarkably well (p. 8), but fertilisers are beginning to react to higher energy prices (p. 8).

	Settling date	First week of March-26	Last week of March-26	Difference in currency	Difference in %
White sugar (sugar#5, London, \$/t)	May 26	411,6	456,7	45,1	11,0%
	Aug 26	409,8	457,6	47,8	11,7%
	Oct 26	409,3	459,8	50,5	12,3%
	Dec 26	410,7	461,2	50,5	12,3%
Raw sugar (sugar#11, NY, cts/lb)	May 26	13,88	15,72	1,84	13,2%
	Aug 26	13,92	15,88	1,96	14,1%
	Oct 26	14,26	16,23	1,97	13,8%
	Dec 26	14,94	16,85	1,91	12,8%
Raw sugar (sugar#11, NY, \$/t)	May 26	306,0	346,5	40,5	13,2%
	Aug 26	306,9	350,2	43,3	14,1%
	Oct 26	314,5	357,9	43,4	13,8%
	Mar 27	329,4	371,6	42,2	12,8%
Premium	Mar26 - Mar 26	105,6	110,2	4,6	4,3%



Warning ! Terms changed for the white on the 15th of Feb. And for the raw on the 28th of Feb. ! Thus, the first week of Feb. In the table above refers to the previous terms.

Sugar#11 and #5 prices since January 2010 front term, US\$/t



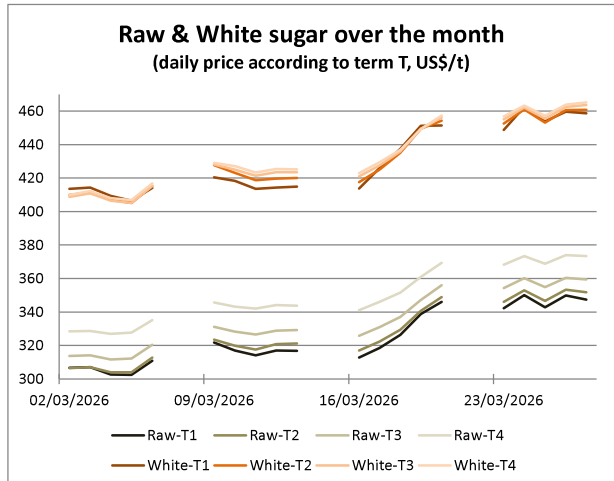


Sugar #11 and #5 : prices

March: energy prices are boosting sugar prices

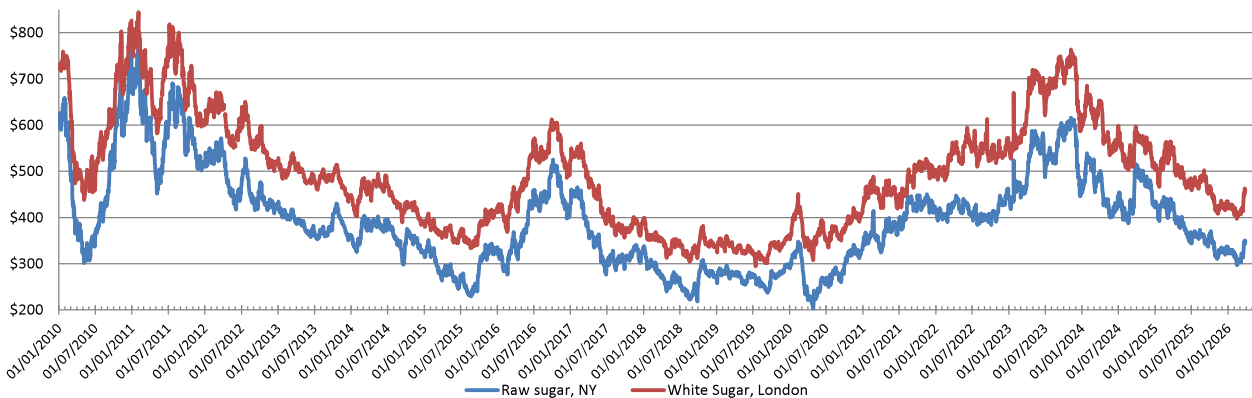
In March, energy prices boosted sugar prices, with a rise of almost 15% over the month. The bombings in the Middle East are indirectly driving sugar prices upwards. This is primarily due to the impact of oil: prices above \$100 per barrel are altering the balance of the sugar market (see the upper graph on page 4). This is evident when considering Brazil: higher oil prices mean higher ethanol prices, resulting in more sugarcane being used to produce ethanol rather than sugar. However, the reality is not so simple due to Brazilian policies: despite oil prices rising by over 20% in the last month, Brazilian ethanol has increased by no more than 2% over the same period (see p. 4). However, the psychological effect is here, with the next Brazilian season set to begin next month. In a climate where speculators are hungry for news that could alter their positions, they are taking advantage of this. Within a month, they have halved their short positions and are now net sellers of 6.4 million tonnes of sugar, compared with over 12 million tonnes at the start of March (p. 2). Naturally, 6 Mt less on the market makes a difference, even if that sugar has never actually been produced. Consequently, sugar prices are recovering, with raw sugar for delivery in May now approaching 16 cents per pound. White sugar is performing even better in the futures market, with the 'white premium' (the difference in price between refined and raw sugar) once again exceeding \$110/tonne, a level not seen since the previous marketing year. This illustrates that, on the one hand, refining is becoming less competitive due to rising energy costs worldwide. However, it also likely reflects expectations of lower demand from Gulf refineries, which have historically been major players in this sector, but which are now in turmoil. Meanwhile, grains are much calmer and freight is holding up remarkably well (p. 8), but fertilisers are beginning to react to higher energy prices (p. 8).

	Settling date	First week of March-26	Last week of March-26	Difference in currency	Difference in %
White sugar (sugar#5, London, \$/t)	May 26	411,6	456,7	45,1	11,0%
	Aug 26	409,8	457,6	47,8	11,7%
	Oct 26	409,3	459,8	50,5	12,3%
	Dec 26	410,7	461,2	50,5	12,3%
Raw sugar (sugar#11, NY, cts/lb)	May 26	13,88	15,72	1,84	13,2%
	Aug 26	13,92	15,88	1,96	14,1%
	Oct 26	14,26	16,23	1,97	13,8%
	Dec 26	14,94	16,85	1,91	12,8%
Raw sugar (sugar#11, NY, \$/t)	May 26	306,0	346,5	40,5	13,2%
	Aug 26	306,9	350,2	43,3	14,1%
	Oct 26	314,5	357,9	43,4	13,8%
	Mar 27	329,4	371,6	42,2	12,8%
Premium	Mar26 - Mar 26	105,6	110,2	4,6	4,3%



Warning ! Terms changed for the white on the 15th of Feb. And for the raw on the 28th of Feb. ! Thus, the first week of Feb. In the table above refers to the previous terms.

Sugar#11 and #5 prices since January 2010 front term, US\$/t



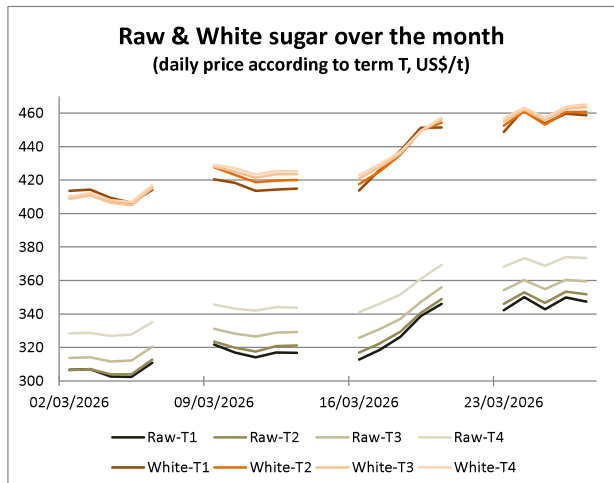


Sugar #11 and #5 : prices

March: energy prices are boosting sugar prices

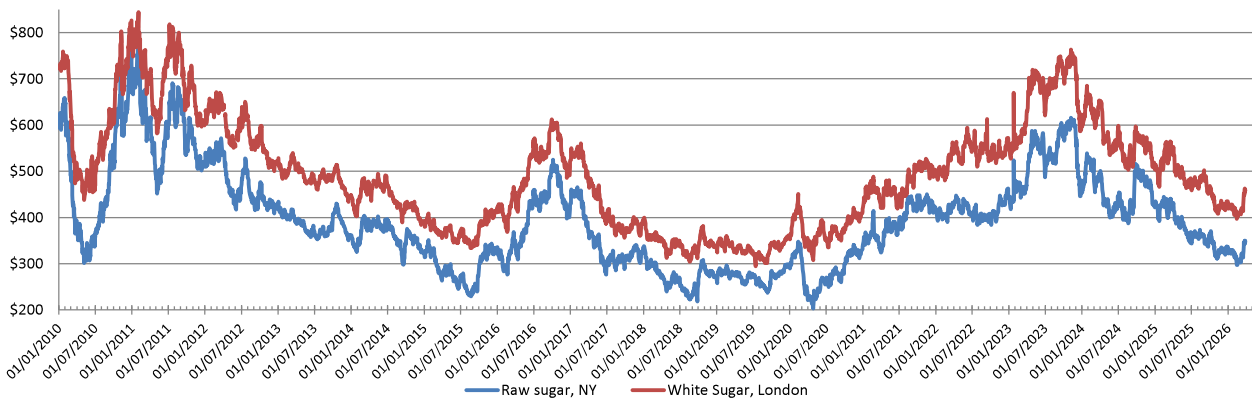
In March, energy prices boosted sugar prices, with a rise of almost 15% over the month. The bombings in the Middle East are indirectly driving sugar prices upwards. This is primarily due to the impact of oil: prices above \$100 per barrel are altering the balance of the sugar market (see the upper graph on page 4). This is evident when considering Brazil: higher oil prices mean higher ethanol prices, resulting in more sugarcane being used to produce ethanol rather than sugar. However, the reality is not so simple due to Brazilian policies: despite oil prices rising by over 20% in the last month, Brazilian ethanol has increased by no more than 2% over the same period (see p. 4). However, the psychological effect is here, with the next Brazilian season set to begin next month. In a climate where speculators are hungry for news that could alter their positions, they are taking advantage of this. Within a month, they have halved their short positions and are now net sellers of 6.4 million tonnes of sugar, compared with over 12 million tonnes at the start of March (p. 2). Naturally, 6 Mt less on the market makes a difference, even if that sugar has never actually been produced. Consequently, sugar prices are recovering, with raw sugar for delivery in May now approaching 16 cents per pound. White sugar is performing even better in the futures market, with the 'white premium' (the difference in price between refined and raw sugar) once again exceeding \$110/tonne, a level not seen since the previous marketing year. This illustrates that, on the one hand, refining is becoming less competitive due to rising energy costs worldwide. However, it also likely reflects expectations of lower demand from Gulf refineries, which have historically been major players in this sector, but which are now in turmoil. Meanwhile, grains are much calmer and freight is holding up remarkably well (p. 8), but fertilisers are beginning to react to higher energy prices (p. 8).

	Settling date	First week of March-26	Last week of March-26	Difference in currency	Difference in %
White sugar (sugar#5, London, \$/t)	May 26	411,6	456,7	45,1	11,0%
	Aug 26	409,8	457,6	47,8	11,7%
	Oct 26	409,3	459,8	50,5	12,3%
	Dec 26	410,7	461,2	50,5	12,3%
Raw sugar (sugar#11, NY, cts/lb)	May 26	13,88	15,72	1,84	13,2%
	Aug 26	13,92	15,88	1,96	14,1%
	Oct 26	14,26	16,23	1,97	13,8%
	Dec 26	14,94	16,85	1,91	12,8%
Raw sugar (sugar#11, NY, \$/t)	May 26	306,0	346,5	40,5	13,2%
	Aug 26	306,9	350,2	43,3	14,1%
	Oct 26	314,5	357,9	43,4	13,8%
	Mar 27	329,4	371,6	42,2	12,8%
Premium	Mar26 - Mar 26	105,6	110,2	4,6	4,3%



Warning ! Terms changed for the white on the 15th of Feb. And for the raw on the 28th of Feb. ! Thus, the first week of Feb. In the table above refers to the previous terms.

Sugar#11 and #5 prices since January 2010 front term, US\$/t



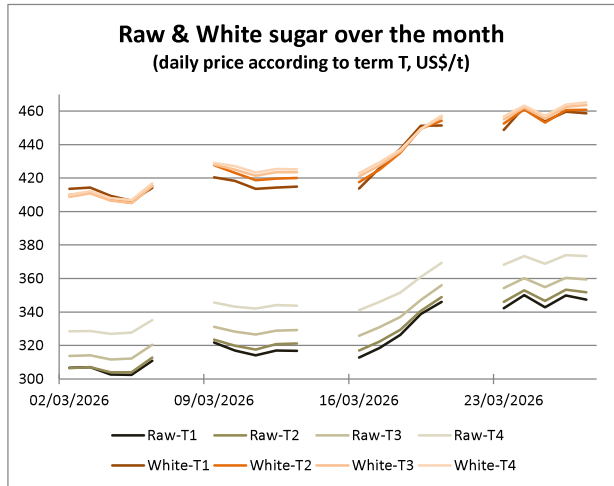


Sugar #11 and #5 : prices

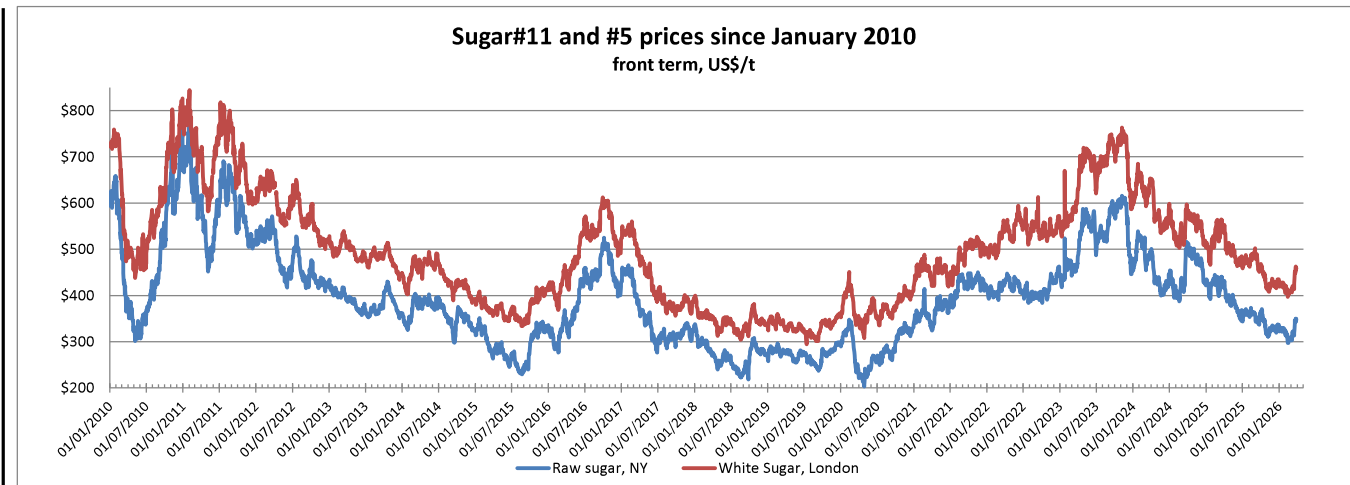
March: energy prices are boosting sugar prices

In March, energy prices boosted sugar prices, with a rise of almost 15% over the month. The bombings in the Middle East are indirectly driving sugar prices upwards. This is primarily due to the impact of oil: prices above \$100 per barrel are altering the balance of the sugar market (see the upper graph on page 4). This is evident when considering Brazil: higher oil prices mean higher ethanol prices, resulting in more sugarcane being used to produce ethanol rather than sugar. However, the reality is not so simple due to Brazilian policies: despite oil prices rising by over 20% in the last month, Brazilian ethanol has increased by no more than 2% over the same period (see p. 4). However, the psychological effect is here, with the next Brazilian season set to begin next month. In a climate where speculators are hungry for news that could alter their positions, they are taking advantage of this. Within a month, they have halved their short positions and are now net sellers of 6.4 million tonnes of sugar, compared with over 12 million tonnes at the start of March (p. 2). Naturally, 6 Mt less on the market makes a difference, even if that sugar has never actually been produced. Consequently, sugar prices are recovering, with raw sugar for delivery in May now approaching 16 cents per pound. White sugar is performing even better in the futures market, with the 'white premium' (the difference in price between refined and raw sugar) once again exceeding \$110/tonne, a level not seen since the previous marketing year. This illustrates that, on the one hand, refining is becoming less competitive due to rising energy costs worldwide. However, it also likely reflects expectations of lower demand from Gulf refineries, which have historically been major players in this sector, but which are now in turmoil. Meanwhile, grains are much calmer and freight is holding up remarkably well (p. 8), but fertilisers are beginning to react to higher energy prices (p. 8).

	Settling date	First week of March-26	Last week of March-26	Difference in currency	Difference in %
White sugar (sugar#5, London, \$/t)	May 26	411,6	456,7	45,1	11,0%
	Aug 26	409,8	457,6	47,8	11,7%
	Oct 26	409,3	459,8	50,5	12,3%
	Dec 26	410,7	461,2	50,5	12,3%
Raw sugar (sugar#11, NY, cts/lb)	May 26	13,88	15,72	1,84	13,2%
	Aug 26	13,92	15,88	1,96	14,1%
	Oct 26	14,26	16,23	1,97	13,8%
	Dec 26	14,94	16,85	1,91	12,8%
Raw sugar (sugar#11, NY, \$/t)	May 26	306,0	346,5	40,5	13,2%
	Aug 26	306,9	350,2	43,3	14,1%
	Oct 26	314,5	357,9	43,4	13,8%
	Mar 27	329,4	371,6	42,2	12,8%
Premium	Mar26 - Mar 26	105,6	110,2	4,6	4,3%



Warning ! Terms changed for the white on the 15th of Feb. And for the raw on the 28th of Feb. ! Thus, the first week of Feb. In the table above refers to the previous terms.



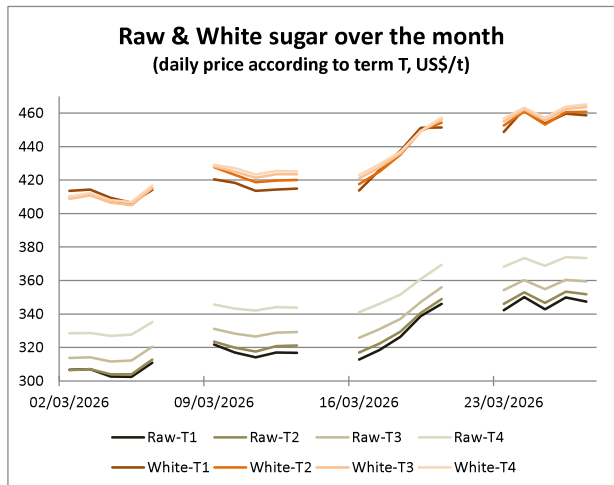


Sugar #11 and #5 : prices

March: energy prices are boosting sugar prices

In March, energy prices boosted sugar prices, with a rise of almost 15% over the month. The bombings in the Middle East are indirectly driving sugar prices upwards. This is primarily due to the impact of oil: prices above \$100 per barrel are altering the balance of the sugar market (see the upper graph on page 4). This is evident when considering Brazil: higher oil prices mean higher ethanol prices, resulting in more sugarcane being used to produce ethanol rather than sugar. However, the reality is not so simple due to Brazilian policies: despite oil prices rising by over 20% in the last month, Brazilian ethanol has increased by no more than 2% over the same period (see p. 4). However, the psychological effect is here, with the next Brazilian season set to begin next month. In a climate where speculators are hungry for news that could alter their positions, they are taking advantage of this. Within a month, they have halved their short positions and are now net sellers of 6.4 million tonnes of sugar, compared with over 12 million tonnes at the start of March (p. 2). Naturally, 6 Mt less on the market makes a difference, even if that sugar has never actually been produced. Consequently, sugar prices are recovering, with raw sugar for delivery in May now approaching 16 cents per pound. White sugar is performing even better in the futures market, with the 'white premium' (the difference in price between refined and raw sugar) once again exceeding \$110/tonne, a level not seen since the previous marketing year. This illustrates that, on the one hand, refining is becoming less competitive due to rising energy costs worldwide. However, it also likely reflects expectations of lower demand from Gulf refineries, which have historically been major players in this sector, but which are now in turmoil. Meanwhile, grains are much calmer and freight is holding up remarkably well (p. 8), but fertilisers are beginning to react to higher energy prices (p. 8).

	Settling date	First week of March-26	Last week of March-26	Difference in currency	Difference in %
White sugar (sugar#5, London, \$/t)	May 26	411,6	456,7	45,1	11,0%
	Aug 26	409,8	457,6	47,8	11,7%
	Oct 26	409,3	459,8	50,5	12,3%
	Dec 26	410,7	461,2	50,5	12,3%
Raw sugar (sugar#11, NY, cts/lb)	May 26	13,88	15,72	1,84	13,2%
	Aug 26	13,92	15,88	1,96	14,1%
	Oct 26	14,26	16,23	1,97	13,8%
	Dec 26	14,94	16,85	1,91	12,8%
Raw sugar (sugar#11, NY, \$/t)	May 26	306,0	346,5	40,5	13,2%
	Aug 26	306,9	350,2	43,3	14,1%
	Oct 26	314,5	357,9	43,4	13,8%
	Mar 27	329,4	371,6	42,2	12,8%
Premium	Mar26 - Mar 26	105,6	110,2	4,6	4,3%



Warning ! Terms changed for the white on the 15th of Feb. And for the raw on the 28th of Feb. ! Thus, the first week of Feb. In the table above refers to the previous terms.

