



Sugar #11 and #5 : prices

April: sugar prices once again approaching 15 cts/lb

The sugar market has remained highly volatile since the start of the year, and the situation in the Middle East is further exacerbating this trend, with energy markets, and especially oil, reaching record levels (p. 4).

In this context, UNICA, the Brazilian sugar producers' association, published, on 30th April, the results of the first fortnight of the season (from 1 to 15 April). These figures were expected and largely confirm the estimates: the proportion of cane dedicated to ethanol in the country's Centre-South region is at its highest, at 67%, compared with just over 55% at the same time last year. Consequently, over the fortnight, ethanol production rose by 21% whilst sugar production fell by more than 26%. This volume of ethanol is weighing on domestic prices (p. 4), without undermining an upward trend in sugar prices.

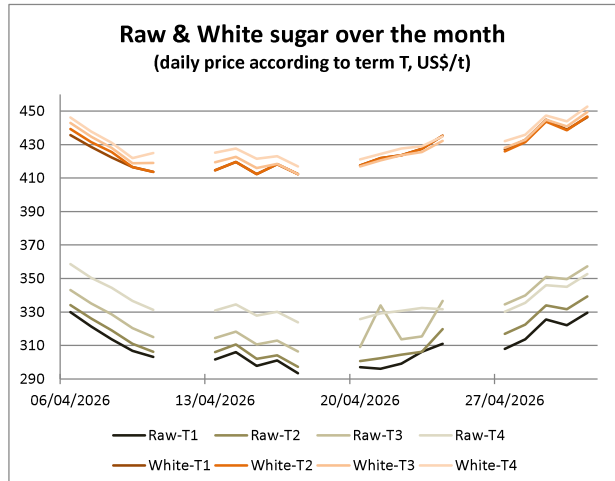
And that's not all: the Brazilian government is expected to raise the mandatory ethanol blending rate in gasoline from 30% to 32% in the coming days.

All of this has enabled raw sugar to perform well over the month. It entered May near 15 cents per pound on the July contract. Refined sugar is rising even further. It must be said that refineries in the Middle East are not expected to operate at their usual capacity, and indeed the 'white premium' (which measures the price difference between refined and raw sugar) has now risen above \$110/t once again, its highest level in a year.

And what can we expect over the coming month? Well, S&P has not really revised its global sugar balance sheet: a surplus of +2.5 Mt is forecast for 2025–26, followed by +3.5 Mt in 2026–27. And speculators remain heavily net sellers (-7.2 Mt, p. 2), a situation that now appears bullish...!

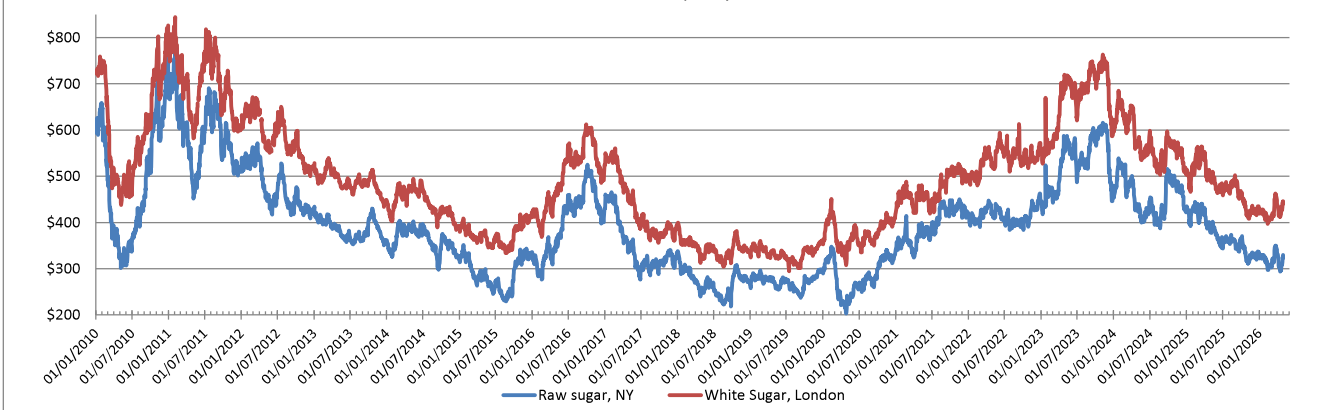
Finally, it is worth noting that the effects of energy costs are beginning to be felt in freight rates (p. 8), with the Supramax index—which tracks sugar—rising by more than 20% over the month. But this is also true for fertilisers, particularly nitrogen-based ones: the chart on p. 8 speaks for itself...

	Settling date	First week of April-26	Last week of April-26	Difference in currency	Difference in %
White sugar (sugar#5, London, \$/t)	Aug 26	423,4	438,0	14,6	3,5%
	Oct 26	425,3	437,3	11,9	2,8%
	Dec 26	428,8	439,2	10,4	2,4%
	Mar 27	432,4	442,4	10,0	2,3%
Raw sugar (sugar#11, NY, cts/lb)	Jul 26	14,29	14,51	0,22	1,5%
	Oct 26	14,48	14,92	0,44	3,0%
	Mar 27	14,90	15,72	0,82	5,5%
	May 27	15,62	15,51	-0,11	-0,7%
Raw sugar (sugar#11, NY, \$/t)	Jul 26	315,0	319,8	4,8	1,5%
	Oct 26	319,3	328,9	9,6	3,0%
	Mar 27	328,4	346,5	18,0	5,5%
	May 27	344,3	341,8	-2,5	-0,7%
Premium	Jul 26 - Aug 26	108,4	118,2	9,9	9,1%



Warning ! Terms changed for the white at mid Apr. And for the raw at the end of April ! Thus, the last week in the table above refers to the new terms.

Sugar#11 and #5 prices since January 2010 front term, US\$/t





Sugar #11 and #5 : prices

April: sugar prices once again approaching 15 cts/lb

The sugar market has remained highly volatile since the start of the year, and the situation in the Middle East is further exacerbating this trend, with energy markets, and especially oil, reaching record levels (p. 4).

In this context, UNICA, the Brazilian sugar producers' association, published, on 30th April, the results of the first fortnight of the season (from 1 to 15 April). These figures were expected and largely confirm the estimates: the proportion of cane dedicated to ethanol in the country's Centre-South region is at its highest, at 67%, compared with just over 55% at the same time last year. Consequently, over the fortnight, ethanol production rose by 21% whilst sugar production fell by more than 26%. This volume of ethanol is weighing on domestic prices (p. 4), without undermining an upward trend in sugar prices.

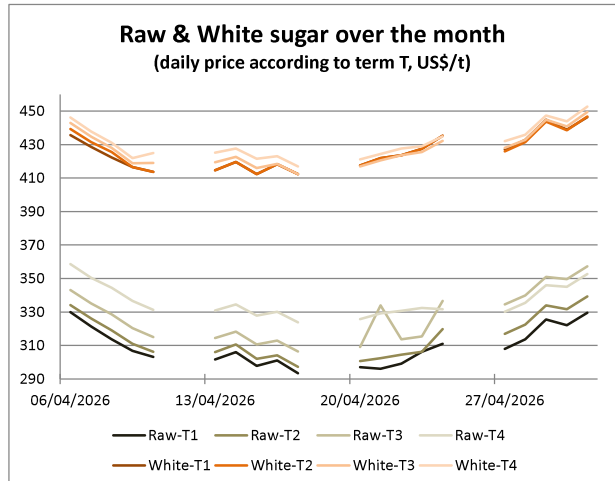
And that's not all: the Brazilian government is expected to raise the mandatory ethanol blending rate in gasoline from 30% to 32% in the coming days.

All of this has enabled raw sugar to perform well over the month. It entered May near 15 cents per pound on the July contract. Refined sugar is rising even further. It must be said that refineries in the Middle East are not expected to operate at their usual capacity, and indeed the 'white premium' (which measures the price difference between refined and raw sugar) has now risen above \$110/t once again, its highest level in a year.

And what can we expect over the coming month? Well, S&P has not really revised its global sugar balance sheet: a surplus of +2.5 Mt is forecast for 2025–26, followed by +3.5 Mt in 2026–27. And speculators remain heavily net sellers (-7.2 Mt, p. 2), a situation that now appears bullish...!

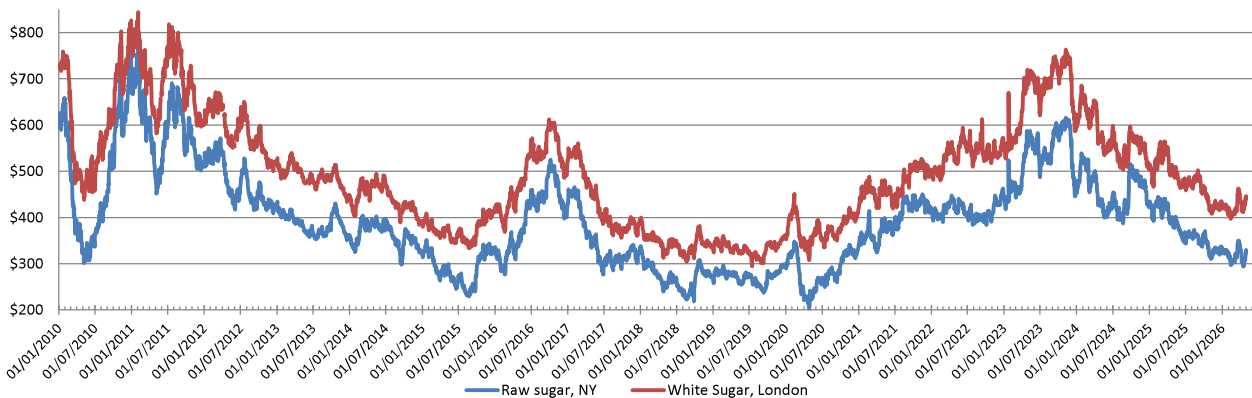
Finally, it is worth noting that the effects of energy costs are beginning to be felt in freight rates (p. 8), with the Supramax index—which tracks sugar—rising by more than 20% over the month. But this is also true for fertilisers, particularly nitrogen-based ones: the chart on p. 8 speaks for itself...

	Settling date	First week of April-26	Last week of April-26	Difference in currency	Difference in %
White sugar (sugar#5, London, \$/t)	Aug 26	423,4	438,0	14,6	3,5%
	Oct 26	425,3	437,3	11,9	2,8%
	Dec 26	428,8	439,2	10,4	2,4%
	Mar 27	432,4	442,4	10,0	2,3%
Raw sugar (sugar#11, NY, cts/lb)	Jul 26	14,29	14,51	0,22	1,5%
	Oct 26	14,48	14,92	0,44	3,0%
	Mar 27	14,90	15,72	0,82	5,5%
	May 27	15,62	15,51	-0,11	-0,7%
Raw sugar (sugar#11, NY, \$/t)	Jul 26	315,0	319,8	4,8	1,5%
	Oct 26	319,3	328,9	9,6	3,0%
	Mar 27	328,4	346,5	18,0	5,5%
	May 27	344,3	341,8	-2,5	-0,7%
Premium	Jul 26 - Aug 26	108,4	118,2	9,9	9,1%



Warning ! Terms changed for the white at mid Apr. And for the raw at the end of April ! Thus, the last week in the table above refers to the new terms.

Sugar#11 and #5 prices since January 2010 front term, US\$/t





Sugar #11 and #5 : prices

April: sugar prices once again approaching 15 cts/lb

The sugar market has remained highly volatile since the start of the year, and the situation in the Middle East is further exacerbating this trend, with energy markets, and especially oil, reaching record levels (p. 4).

In this context, UNICA, the Brazilian sugar producers' association, published, on 30th April, the results of the first fortnight of the season (from 1 to 15 April). These figures were expected and largely confirm the estimates: the proportion of cane dedicated to ethanol in the country's Centre-South region is at its highest, at 67%, compared with just over 55% at the same time last year. Consequently, over the fortnight, ethanol production rose by 21% whilst sugar production fell by more than 26%. This volume of ethanol is weighing on domestic prices (p. 4), without undermining an upward trend in sugar prices.

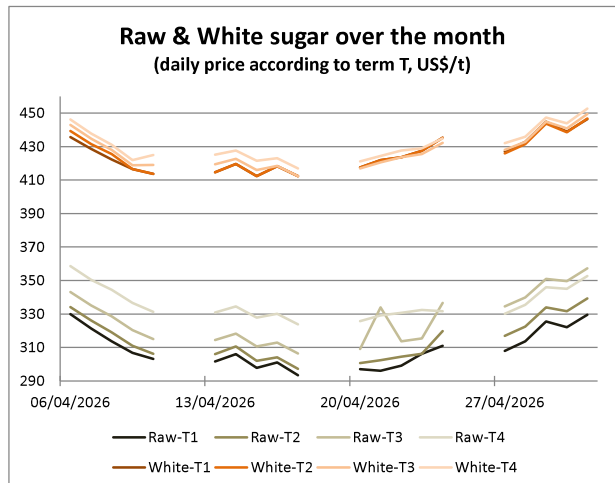
And that's not all: the Brazilian government is expected to raise the mandatory ethanol blending rate in gasoline from 30% to 32% in the coming days.

All of this has enabled raw sugar to perform well over the month. It entered May near 15 cents per pound on the July contract. Refined sugar is rising even further. It must be said that refineries in the Middle East are not expected to operate at their usual capacity, and indeed the 'white premium' (which measures the price difference between refined and raw sugar) has now risen above \$110/t once again, its highest level in a year.

And what can we expect over the coming month? Well, S&P has not really revised its global sugar balance sheet: a surplus of +2.5 Mt is forecast for 2025–26, followed by +3.5 Mt in 2026–27. And speculators remain heavily net sellers (-7.2 Mt, p. 2), a situation that now appears bullish...!

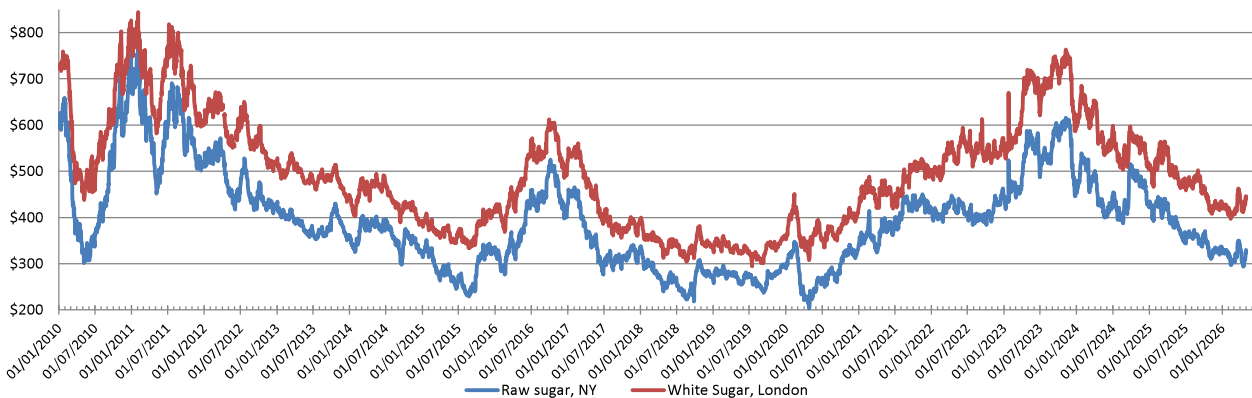
Finally, it is worth noting that the effects of energy costs are beginning to be felt in freight rates (p. 8), with the Supramax index—which tracks sugar—rising by more than 20% over the month. But this is also true for fertilisers, particularly nitrogen-based ones: the chart on p. 8 speaks for itself...

	Settling date	First week of April-26	Last week of April-26	Difference in currency	Difference in %
White sugar (sugar#5, London, \$/t)	Aug 26	423,4	438,0	14,6	3,5%
	Oct 26	425,3	437,3	11,9	2,8%
	Dec 26	428,8	439,2	10,4	2,4%
	Mar 27	432,4	442,4	10,0	2,3%
Raw sugar (sugar#11, NY, cts/lb)	Jul 26	14,29	14,51	0,22	1,5%
	Oct 26	14,48	14,92	0,44	3,0%
	Mar 27	14,90	15,72	0,82	5,5%
	May 27	15,62	15,51	-0,11	-0,7%
Raw sugar (sugar#11, NY, \$/t)	Jul 26	315,0	319,8	4,8	1,5%
	Oct 26	319,3	328,9	9,6	3,0%
	Mar 27	328,4	346,5	18,0	5,5%
	May 27	344,3	341,8	-2,5	-0,7%
Premium	Jul 26 - Aug 26	108,4	118,2	9,9	9,1%



Warning ! Terms changed for the white at mid Apr. And for the raw at the end of April ! Thus, the last week in the table above refers to the new terms.

Sugar#11 and #5 prices since January 2010 front term, US\$/t





Sugar #11 and #5 : prices

April: sugar prices once again approaching 15 cts/lb

The sugar market has remained highly volatile since the start of the year, and the situation in the Middle East is further exacerbating this trend, with energy markets, and especially oil, reaching record levels (p. 4).

In this context, UNICA, the Brazilian sugar producers' association, published, on 30th April, the results of the first fortnight of the season (from 1 to 15 April). These figures were expected and largely confirm the estimates: the proportion of cane dedicated to ethanol in the country's Centre-South region is at its highest, at 67%, compared with just over 55% at the same time last year. Consequently, over the fortnight, ethanol production rose by 21% whilst sugar production fell by more than 26%. This volume of ethanol is weighing on domestic prices (p. 4), without undermining an upward trend in sugar prices.

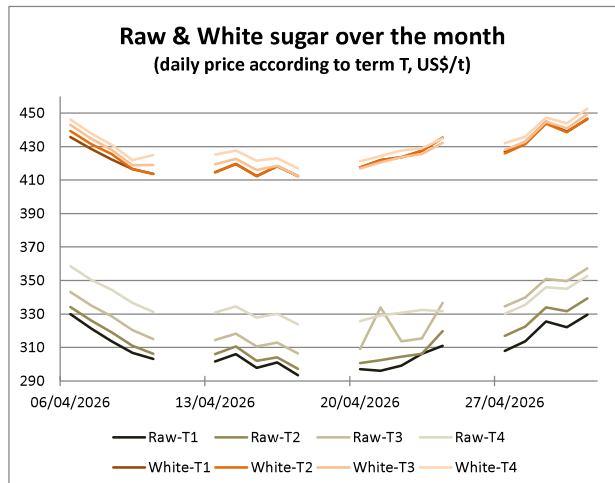
And that's not all: the Brazilian government is expected to raise the mandatory ethanol blending rate in gasoline from 30% to 32% in the coming days.

All of this has enabled raw sugar to perform well over the month. It entered May near 15 cents per pound on the July contract. Refined sugar is rising even further. It must be said that refineries in the Middle East are not expected to operate at their usual capacity, and indeed the 'white premium' (which measures the price difference between refined and raw sugar) has now risen above \$110/t once again, its highest level in a year.

And what can we expect over the coming month? Well, S&P has not really revised its global sugar balance sheet: a surplus of +2.5 Mt is forecast for 2025–26, followed by +3.5 Mt in 2026–27. And speculators remain heavily net sellers (-7.2 Mt, p. 2), a situation that now appears bullish...!

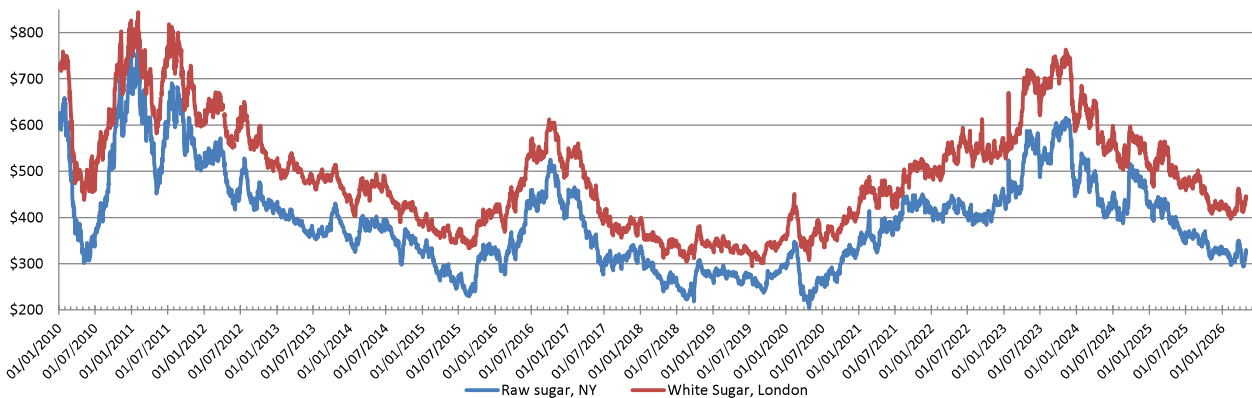
Finally, it is worth noting that the effects of energy costs are beginning to be felt in freight rates (p. 8), with the Supramax index—which tracks sugar—rising by more than 20% over the month. But this is also true for fertilisers, particularly nitrogen-based ones: the chart on p. 8 speaks for itself...

	Settling date	First week of April-26	Last week of April-26	Difference in currency	Difference in %
White sugar (sugar#5, London, \$/t)	Aug 26	423,4	438,0	14,6	3,5%
	Oct 26	425,3	437,3	11,9	2,8%
	Dec 26	428,8	439,2	10,4	2,4%
	Mar 27	432,4	442,4	10,0	2,3%
Raw sugar (sugar#11, NY, cts/lb)	Jul 26	14,29	14,51	0,22	1,5%
	Oct 26	14,48	14,92	0,44	3,0%
	Mar 27	14,90	15,72	0,82	5,5%
	May 27	15,62	15,51	-0,11	-0,7%
Raw sugar (sugar#11, NY, \$/t)	Jul 26	315,0	319,8	4,8	1,5%
	Oct 26	319,3	328,9	9,6	3,0%
	Mar 27	328,4	346,5	18,0	5,5%
	May 27	344,3	341,8	-2,5	-0,7%
Premium	Jul 26 - Aug 26	108,4	118,2	9,9	9,1%



Warning ! Terms changed for the white at mid Apr. And for the raw at the end of April ! Thus, the last week in the table above refers to the new terms.

Sugar#11 and #5 prices since January 2010 front term, US\$/t





Sugar #11 and #5 : prices

April: sugar prices once again approaching 15 cts/lb

The sugar market has remained highly volatile since the start of the year, and the situation in the Middle East is further exacerbating this trend, with energy markets, and especially oil, reaching record levels (p. 4).

In this context, UNICA, the Brazilian sugar producers' association, published, on 30th April, the results of the first fortnight of the season (from 1 to 15 April). These figures were expected and largely confirm the estimates: the proportion of cane dedicated to ethanol in the country's Centre-South region is at its highest, at 67%, compared with just over 55% at the same time last year. Consequently, over the fortnight, ethanol production rose by 21% whilst sugar production fell by more than 26%. This volume of ethanol is weighing on domestic prices (p. 4), without undermining an upward trend in sugar prices.

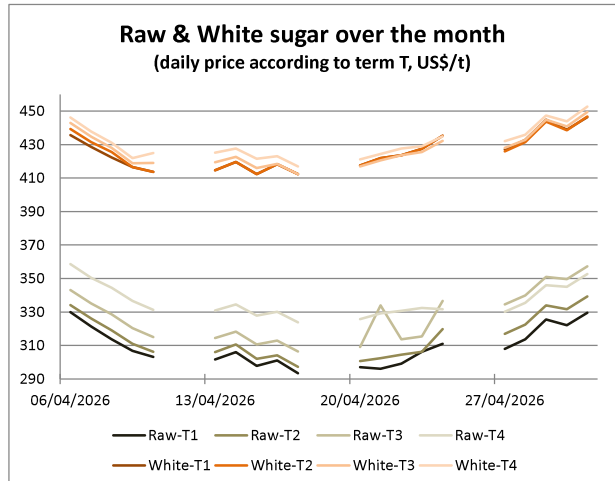
And that's not all: the Brazilian government is expected to raise the mandatory ethanol blending rate in gasoline from 30% to 32% in the coming days.

All of this has enabled raw sugar to perform well over the month. It entered May near 15 cents per pound on the July contract. Refined sugar is rising even further. It must be said that refineries in the Middle East are not expected to operate at their usual capacity, and indeed the 'white premium' (which measures the price difference between refined and raw sugar) has now risen above \$110/t once again, its highest level in a year.

And what can we expect over the coming month? Well, S&P has not really revised its global sugar balance sheet: a surplus of +2.5 Mt is forecast for 2025–26, followed by +3.5 Mt in 2026–27. And speculators remain heavily net sellers (-7.2 Mt, p. 2), a situation that now appears bullish...!

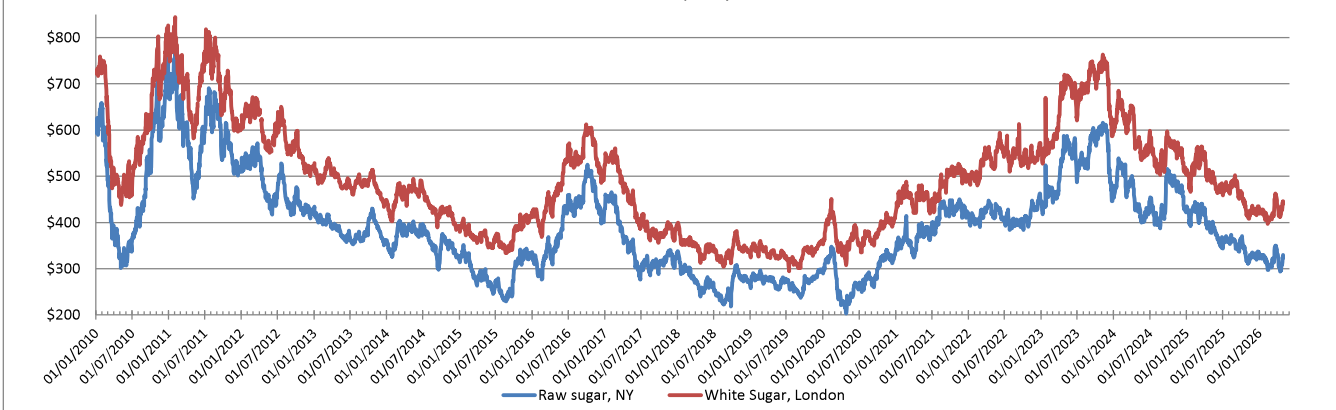
Finally, it is worth noting that the effects of energy costs are beginning to be felt in freight rates (p. 8), with the Supramax index—which tracks sugar—rising by more than 20% over the month. But this is also true for fertilisers, particularly nitrogen-based ones: the chart on p. 8 speaks for itself...

	Settling date	First week of April-26	Last week of April-26	Difference in currency	Difference in %
White sugar (sugar#5, London, \$/t)	Aug 26	423,4	438,0	14,6	3,5%
	Oct 26	425,3	437,3	11,9	2,8%
	Dec 26	428,8	439,2	10,4	2,4%
	Mar 27	432,4	442,4	10,0	2,3%
Raw sugar (sugar#11, NY, cts/lb)	Jul 26	14,29	14,51	0,22	1,5%
	Oct 26	14,48	14,92	0,44	3,0%
	Mar 27	14,90	15,72	0,82	5,5%
Raw sugar (sugar#11, NY, \$/t)	Jul 26	315,0	319,8	4,8	1,5%
	Oct 26	319,3	328,9	9,6	3,0%
	Mar 27	328,4	346,5	18,0	5,5%
	May 27	344,3	341,8	-2,5	-0,7%
Premium	Jul 26 - Aug 26	108,4	118,2	9,9	9,1%



Warning ! Terms changed for the white at mid Apr. And for the raw at the end of April ! Thus, the last week in the table above refers to the new terms.

Sugar#11 and #5 prices since January 2010 front term, US\$/t





Sugar #11 and #5 : prices

April: sugar prices once again approaching 15 cts/lb

The sugar market has remained highly volatile since the start of the year, and the situation in the Middle East is further exacerbating this trend, with energy markets, and especially oil, reaching record levels (p. 4).

In this context, UNICA, the Brazilian sugar producers' association, published, on 30th April, the results of the first fortnight of the season (from 1 to 15 April). These figures were expected and largely confirm the estimates: the proportion of cane dedicated to ethanol in the country's Centre-South region is at its highest, at 67%, compared with just over 55% at the same time last year. Consequently, over the fortnight, ethanol production rose by 21% whilst sugar production fell by more than 26%. This volume of ethanol is weighing on domestic prices (p. 4), without undermining an upward trend in sugar prices.

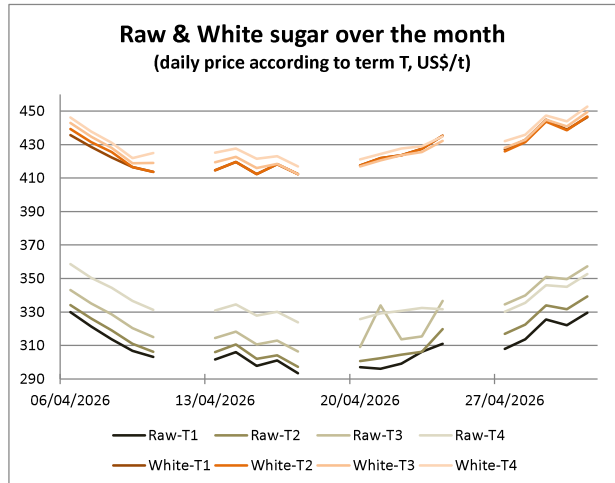
And that's not all: the Brazilian government is expected to raise the mandatory ethanol blending rate in gasoline from 30% to 32% in the coming days.

All of this has enabled raw sugar to perform well over the month. It entered May near 15 cents per pound on the July contract. Refined sugar is rising even further. It must be said that refineries in the Middle East are not expected to operate at their usual capacity, and indeed the 'white premium' (which measures the price difference between refined and raw sugar) has now risen above \$110/t once again, its highest level in a year.

And what can we expect over the coming month? Well, S&P has not really revised its global sugar balance sheet: a surplus of +2.5 Mt is forecast for 2025–26, followed by +3.5 Mt in 2026–27. And speculators remain heavily net sellers (-7.2 Mt, p. 2), a situation that now appears bullish...!

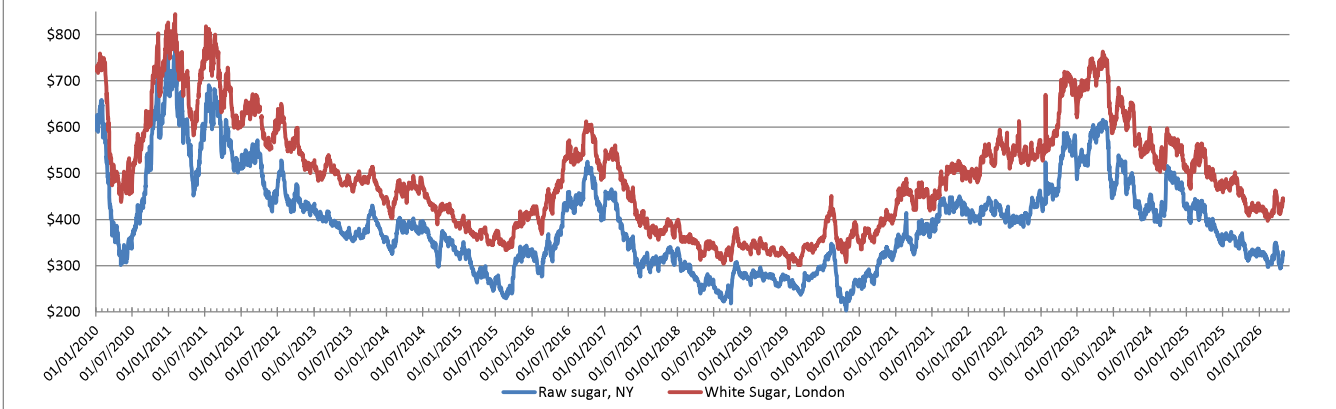
Finally, it is worth noting that the effects of energy costs are beginning to be felt in freight rates (p. 8), with the Supramax index—which tracks sugar—rising by more than 20% over the month. But this is also true for fertilisers, particularly nitrogen-based ones: the chart on p. 8 speaks for itself...

	Settling date	First week of April-26	Last week of April-26	Difference in currency	Difference in %
White sugar (sugar#5, London, \$/t)	Aug 26	423,4	438,0	14,6	3,5%
	Oct 26	425,3	437,3	11,9	2,8%
	Dec 26	428,8	439,2	10,4	2,4%
	Mar 27	432,4	442,4	10,0	2,3%
Raw sugar (sugar#11, NY, cts/lb)	Jul 26	14,29	14,51	0,22	1,5%
	Oct 26	14,48	14,92	0,44	3,0%
	Mar 27	14,90	15,72	0,82	5,5%
	May 27	15,62	15,51	-0,11	-0,7%
Raw sugar (sugar#11, NY, \$/t)	Jul 26	315,0	319,8	4,8	1,5%
	Oct 26	319,3	328,9	9,6	3,0%
	Mar 27	328,4	346,5	18,0	5,5%
	May 27	344,3	341,8	-2,5	-0,7%
Premium	Jul 26 - Aug 26	108,4	118,2	9,9	9,1%



Warning ! Terms changed for the white at mid Apr. And for the raw at the end of April ! Thus, the last week in the table above refers to the new terms.

Sugar#11 and #5 prices since January 2010 front term, US\$/t





Sugar #11 and #5 : prices

April: sugar prices once again approaching 15 cts/lb

The sugar market has remained highly volatile since the start of the year, and the situation in the Middle East is further exacerbating this trend, with energy markets, and especially oil, reaching record levels (p. 4).

In this context, UNICA, the Brazilian sugar producers' association, published, on 30th April, the results of the first fortnight of the season (from 1 to 15 April). These figures were expected and largely confirm the estimates: the proportion of cane dedicated to ethanol in the country's Centre-South region is at its highest, at 67%, compared with just over 55% at the same time last year. Consequently, over the fortnight, ethanol production rose by 21% whilst sugar production fell by more than 26%. This volume of ethanol is weighing on domestic prices (p. 4), without undermining an upward trend in sugar prices.

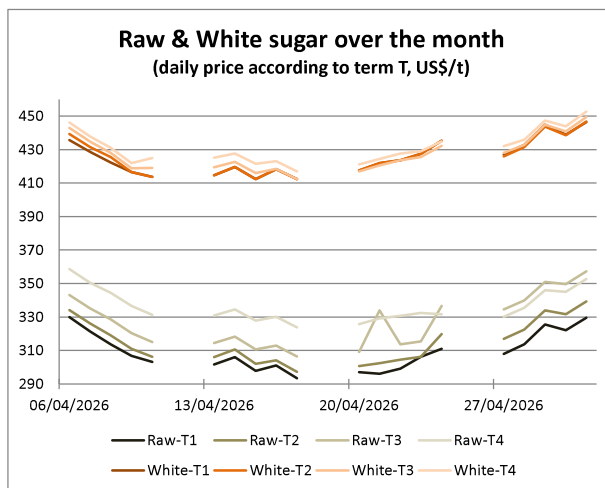
And that's not all: the Brazilian government is expected to raise the mandatory ethanol blending rate in gasoline from 30% to 32% in the coming days.

All of this has enabled raw sugar to perform well over the month. It entered May near 15 cents per pound on the July contract. Refined sugar is rising even further. It must be said that refineries in the Middle East are not expected to operate at their usual capacity, and indeed the 'white premium' (which measures the price difference between refined and raw sugar) has now risen above \$110/t once again, its highest level in a year.

And what can we expect over the coming month? Well, S&P has not really revised its global sugar balance sheet: a surplus of +2.5 Mt is forecast for 2025–26, followed by +3.5 Mt in 2026–27. And speculators remain heavily net sellers (-7.2 Mt, p. 2), a situation that now appears bullish...!

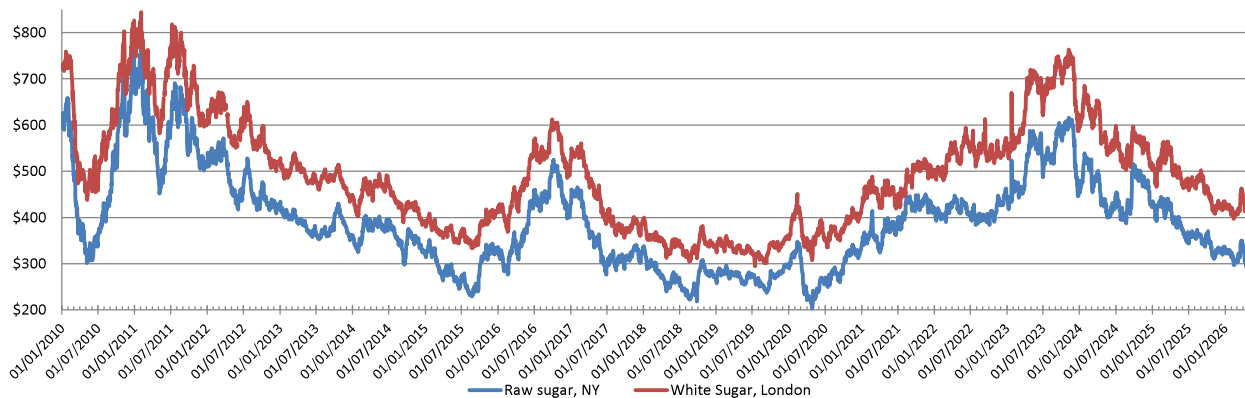
Finally, it is worth noting that the effects of energy costs are beginning to be felt in freight rates (p. 8), with the Supramax index—which tracks sugar—rising by more than 20% over the month. But this is also true for fertilisers, particularly nitrogen-based ones: the chart on p. 8 speaks for itself...

	Settling date	First week of April-26	Last week of April-26	Difference in currency	Difference in %
White sugar (sugar#5, London, \$/t)	Aug 26	423,4	438,0	14,6	3,5%
	Oct 26	425,3	437,3	11,9	2,8%
	Dec 26	428,8	439,2	10,4	2,4%
	Mar 27	432,4	442,4	10,0	2,3%
Raw sugar (sugar#11, NY, cts/lb)	Jul 26	14,29	14,51	0,22	1,5%
	Oct 26	14,48	14,92	0,44	3,0%
	Mar 27	14,90	15,72	0,82	5,5%
Raw sugar (sugar#11, NY, \$/t)	Jul 26	315,0	319,8	4,8	1,5%
	Oct 26	319,3	328,9	9,6	3,0%
	Mar 27	328,4	346,5	18,0	5,5%
	May 27	344,3	341,8	-2,5	-0,7%
Premium	Jul 26 - Aug 26	108,4	118,2	9,9	9,1%



Warning ! Terms changed for the white at mid Apr. And for the raw at the end of April ! Thus, the last week in the table above refers to the new terms.

Sugar#11 and #5 prices since January 2010 front term, US\$/t





Sugar #11 and #5 : prices

April: sugar prices once again approaching 15 cts/lb

The sugar market has remained highly volatile since the start of the year, and the situation in the Middle East is further exacerbating this trend, with energy markets, and especially oil, reaching record levels (p. 4).

In this context, UNICA, the Brazilian sugar producers' association, published, on 30th April, the results of the first fortnight of the season (from 1 to 15 April). These figures were expected and largely confirm the estimates: the proportion of cane dedicated to ethanol in the country's Centre-South region is at its highest, at 67%, compared with just over 55% at the same time last year. Consequently, over the fortnight, ethanol production rose by 21% whilst sugar production fell by more than 26%. This volume of ethanol is weighing on domestic prices (p. 4), without undermining an upward trend in sugar prices.

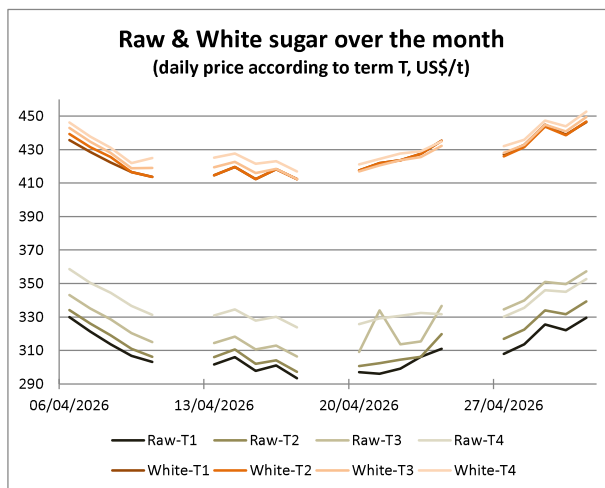
And that's not all: the Brazilian government is expected to raise the mandatory ethanol blending rate in gasoline from 30% to 32% in the coming days.

All of this has enabled raw sugar to perform well over the month. It entered May near 15 cents per pound on the July contract. Refined sugar is rising even further. It must be said that refineries in the Middle East are not expected to operate at their usual capacity, and indeed the 'white premium' (which measures the price difference between refined and raw sugar) has now risen above \$110/t once again, its highest level in a year.

And what can we expect over the coming month? Well, S&P has not really revised its global sugar balance sheet: a surplus of +2.5 Mt is forecast for 2025–26, followed by +3.5 Mt in 2026–27. And speculators remain heavily net sellers (-7.2 Mt, p. 2), a situation that now appears bullish...!

Finally, it is worth noting that the effects of energy costs are beginning to be felt in freight rates (p. 8), with the Supramax index—which tracks sugar—rising by more than 20% over the month. But this is also true for fertilisers, particularly nitrogen-based ones: the chart on p. 8 speaks for itself...

	Settling date	First week of April-26	Last week of April-26	Difference in currency	Difference in %
White sugar (sugar#5, London, \$/t)	Aug 26	423,4	438,0	14,6	3,5%
	Oct 26	425,3	437,3	11,9	2,8%
	Dec 26	428,8	439,2	10,4	2,4%
	Mar 27	432,4	442,4	10,0	2,3%
Raw sugar (sugar#11, NY, cts/lb)	Jul 26	14,29	14,51	0,22	1,5%
	Oct 26	14,48	14,92	0,44	3,0%
	Mar 27	14,90	15,72	0,82	5,5%
	May 27	15,62	15,51	-0,11	-0,7%
Raw sugar (sugar#11, NY, \$/t)	Jul 26	315,0	319,8	4,8	1,5%
	Oct 26	319,3	328,9	9,6	3,0%
	Mar 27	328,4	346,5	18,0	5,5%
	May 27	344,3	341,8	-2,5	-0,7%
Premium	Jul 26 - Aug 26	108,4	118,2	9,9	9,1%



Warning ! Terms changed for the white at mid Apr. And for the raw at the end of April ! Thus, the last week in the table above refers to the new terms.

Sugar#11 and #5 prices since January 2010 front term, US\$/t

